

What is greywater?

Wastewater generated from domestic purposes that is **not contaminated with faecal matter**

Majority pollutants derived from soaps, detergents, sweat, dead skin, oil and grease, in some cases **bacteria and pathogens** too!

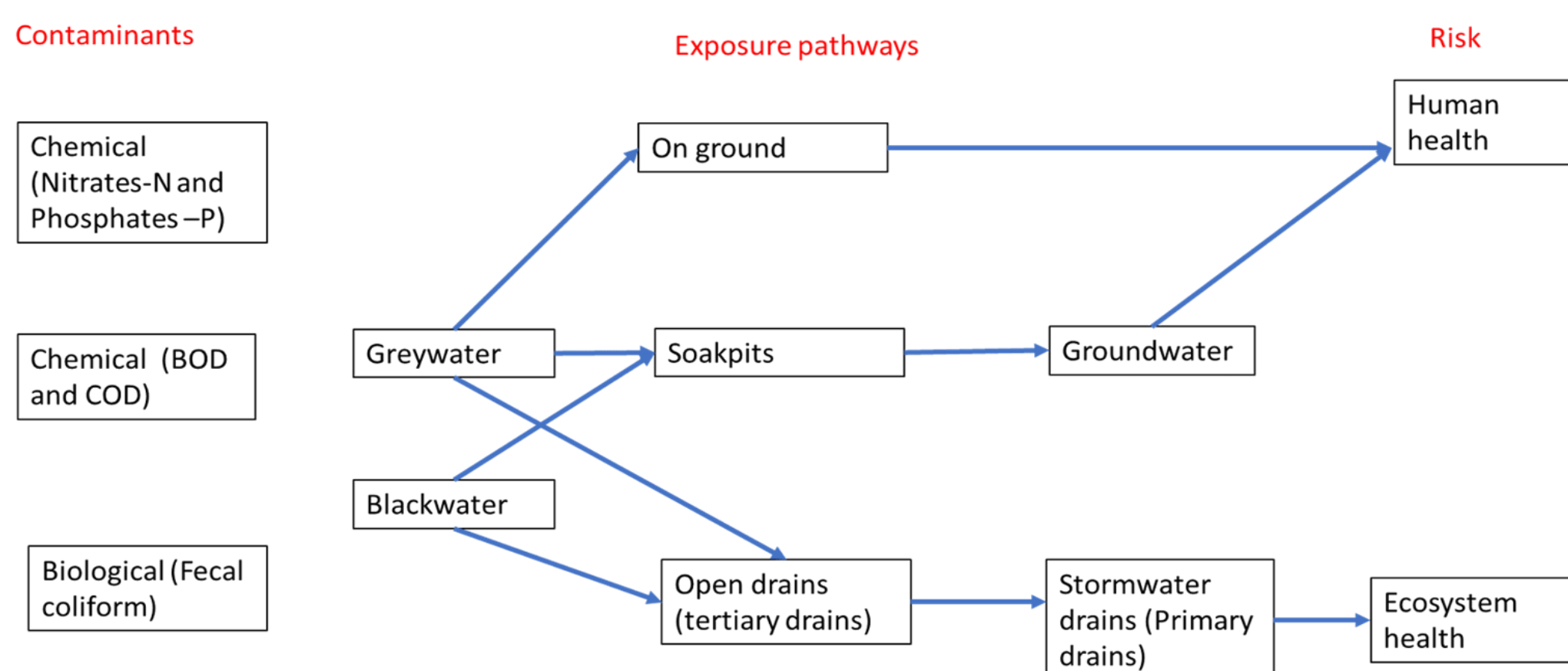


Why greywater management?

- Commonly discharged into open spaces, drains and centralised treatment systems (mixed with blackwater)
- Opportunity to reduce freshwater demand in arid and semi arid regions

Why greywater management in schools ?

Health and Wellbeing implications of improper disposal of wastewater

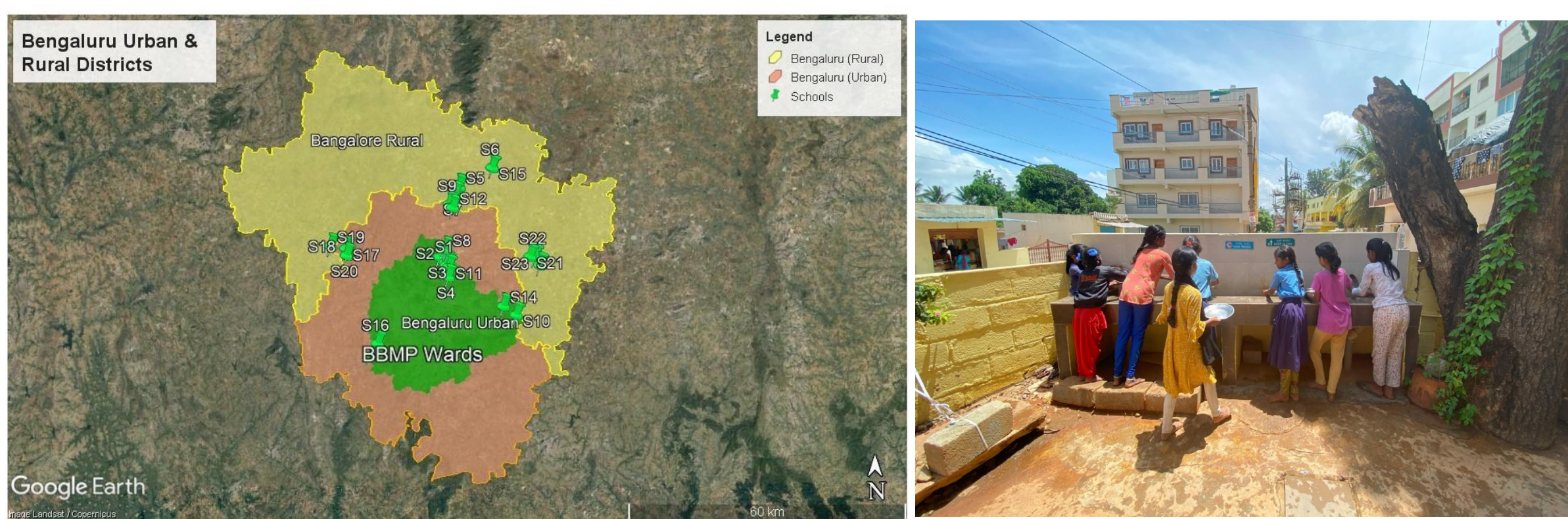


Disproportionate exposure to unhealthy environment

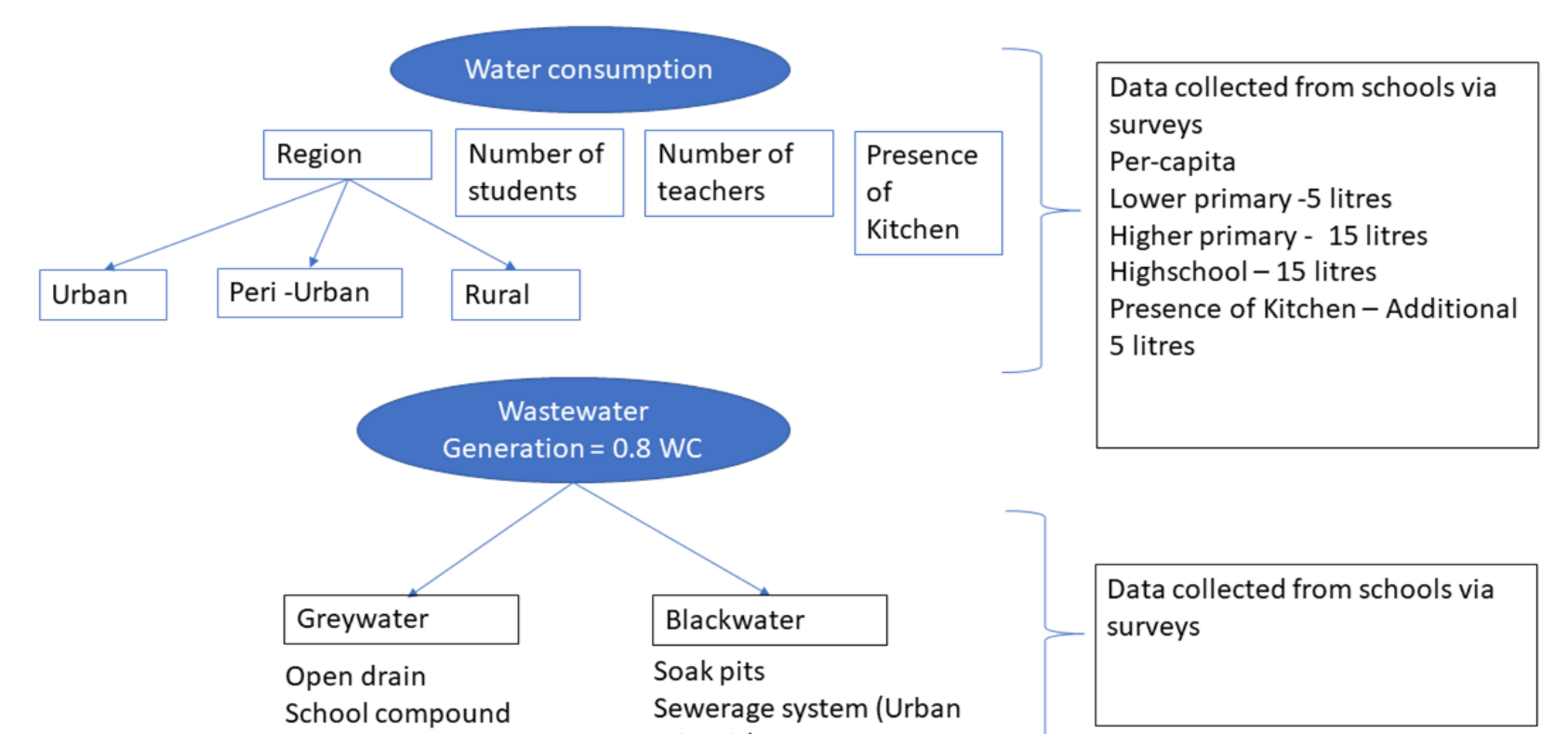
- Fewer resources to create solutions against wastewater contamination
- Standardised guidelines don't differentiate between domestic wastewater characteristics and wastewater generated in schools.

Objectives

1. Understand the status of WASH Infrastructure in schools across Bengaluru



2. Comprehensive water quality testing and socio-economic data documentation



3. Development of Webtool

AquaWISE

